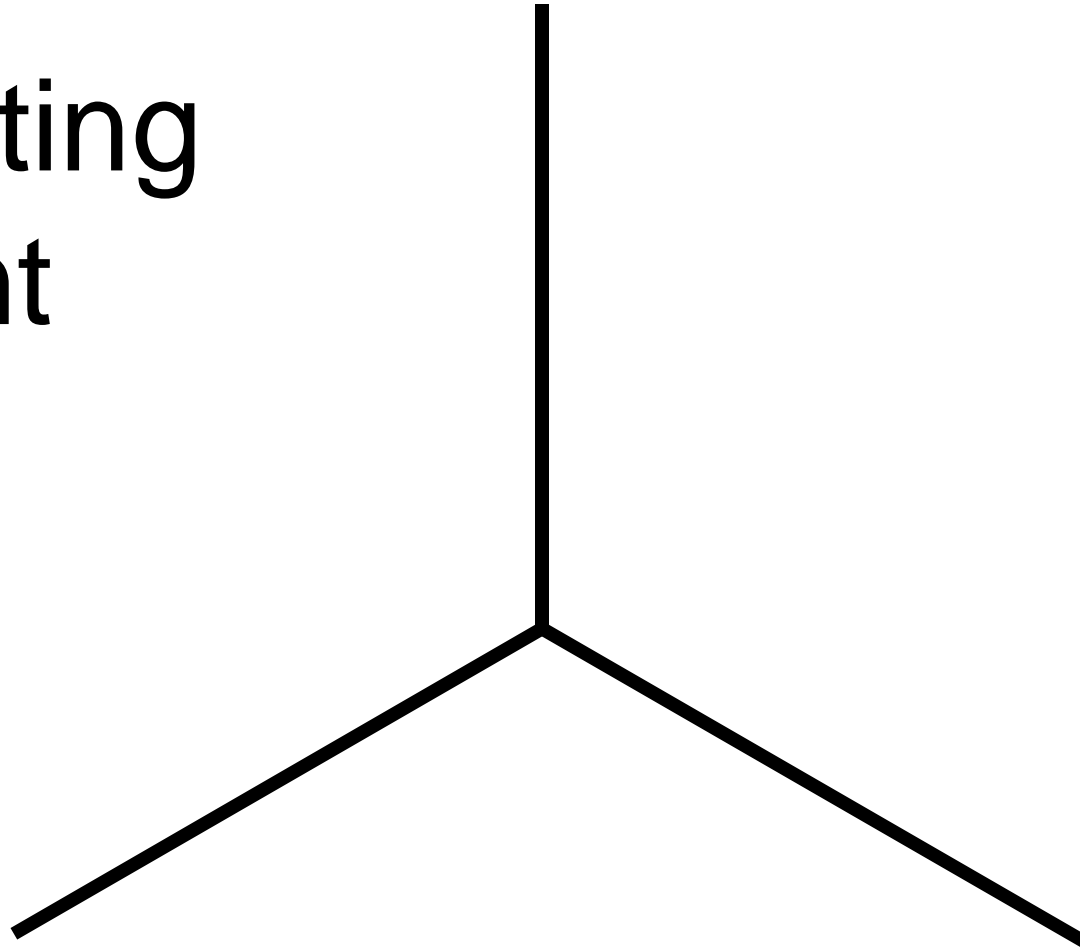

Proposed 250 – 375 Beds
Model Hospital for
Reliance ADA Group

RELIANCE HEALTH VENTURES LTD.

Architectural Brief

1. Capable of being replicated with ease
2. Similar spaces should be modular
3. Structural system should be modular
4. Reserved “rights-of-way” for service runs
5. Fit on sites with roads on one or more sides
6. Multiple possible entrances
7. 30.00 M height restriction as per NBC.
8. Make an architectural statement for branding

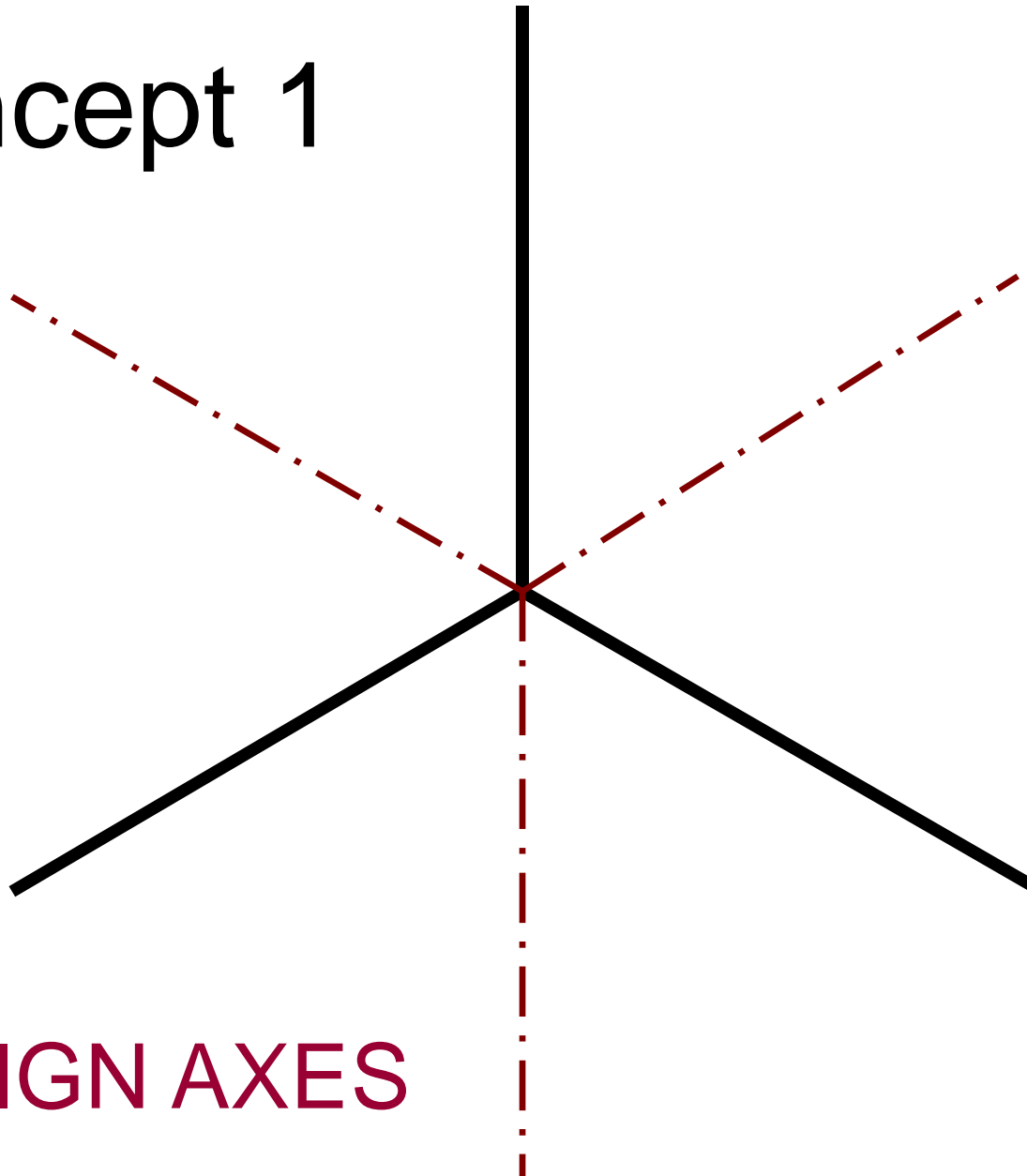
Starting
Point



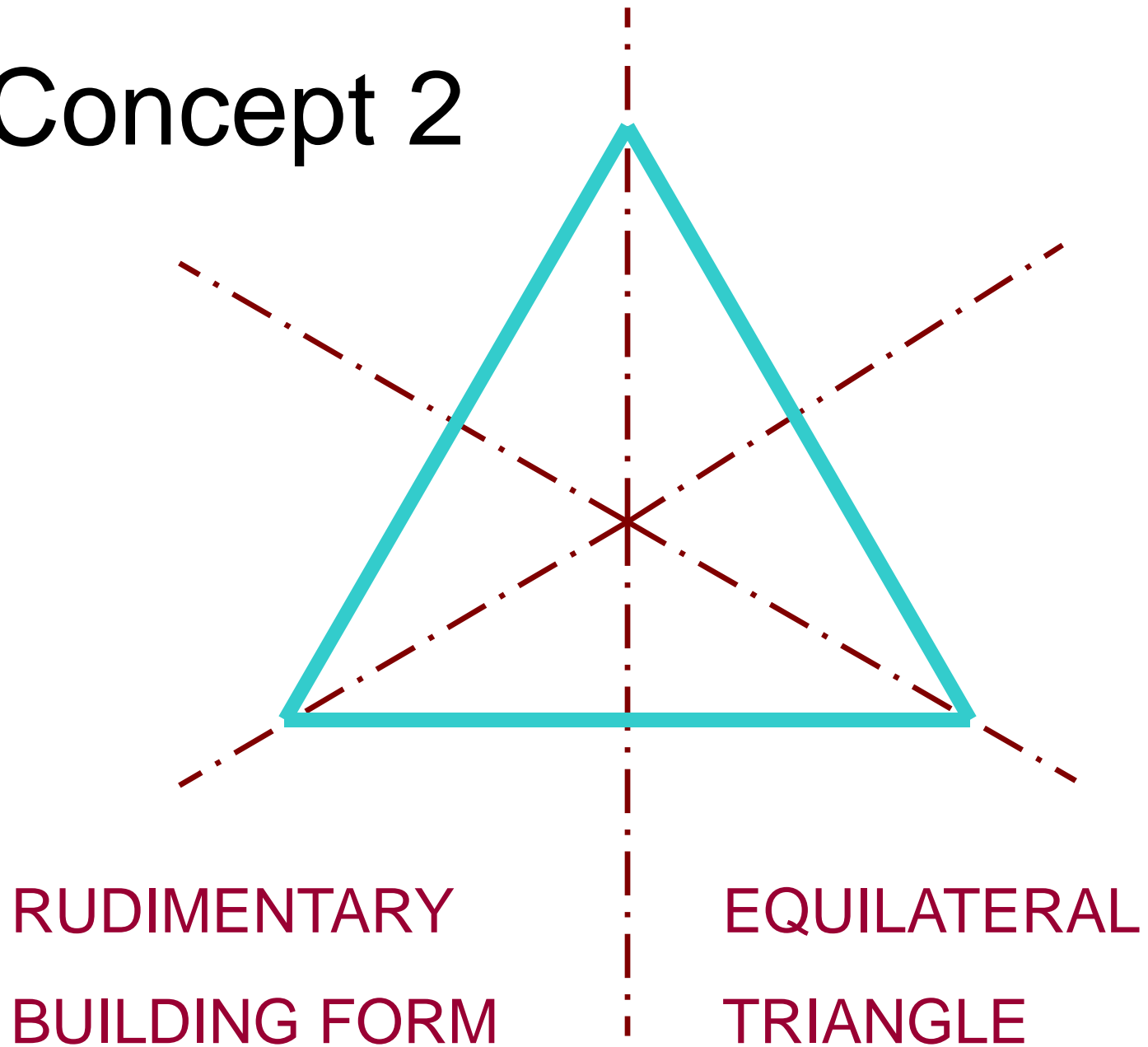
A MERCEDES BENZ LOGO

Concept 1

DESIGN AXES



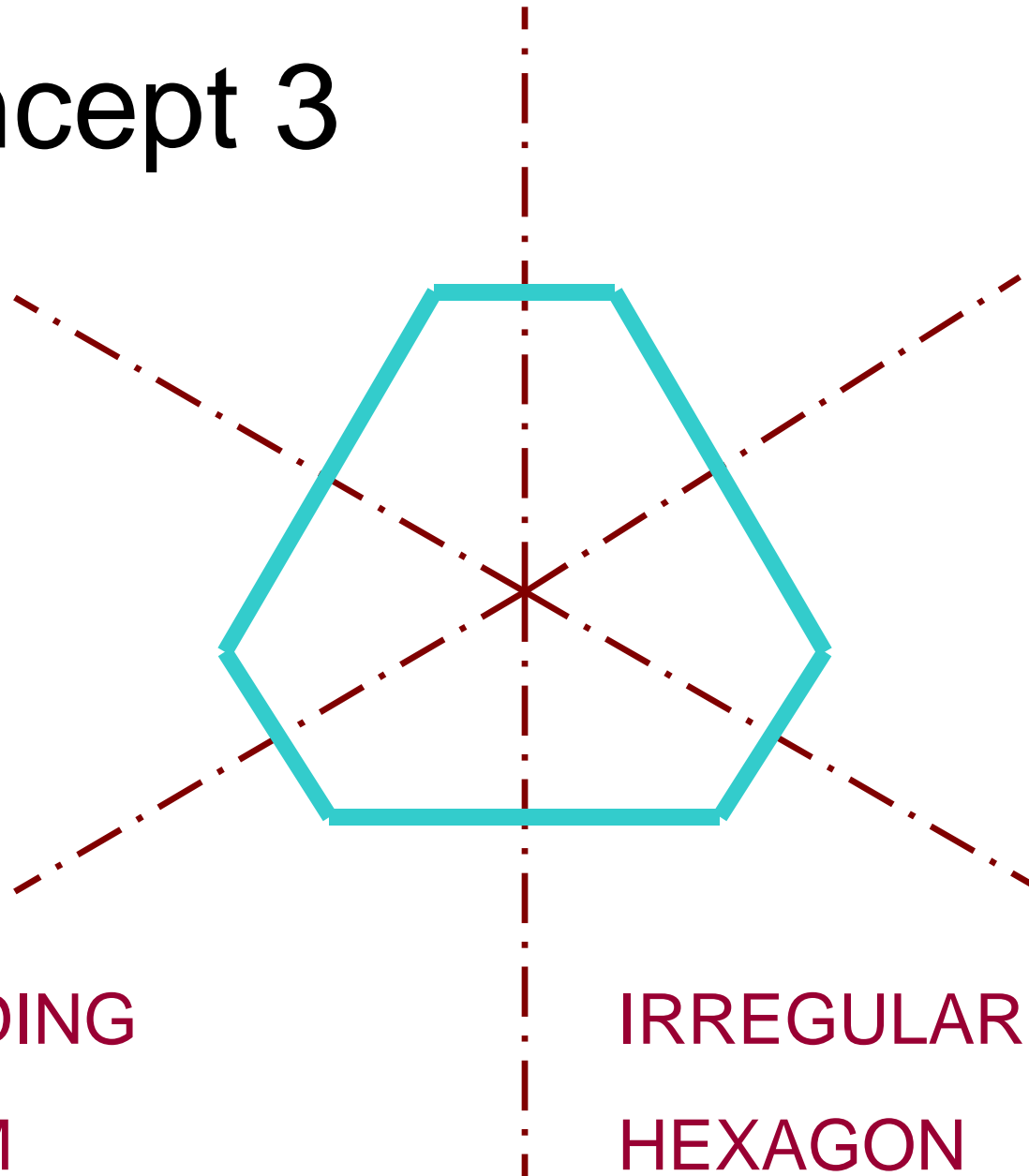
Concept 2



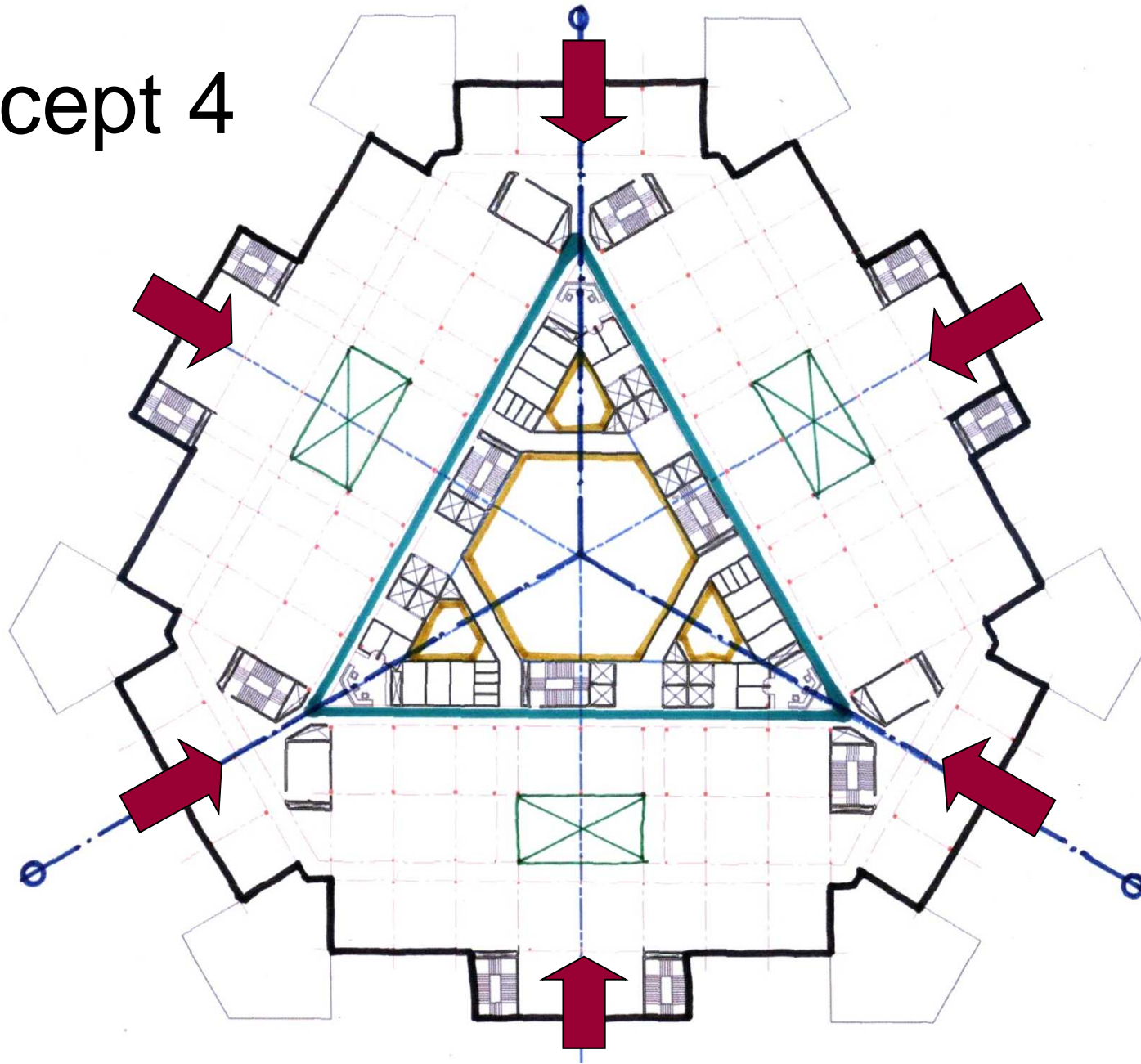
Concept 3

BUILDING
FORM

IRREGULAR
HEXAGON

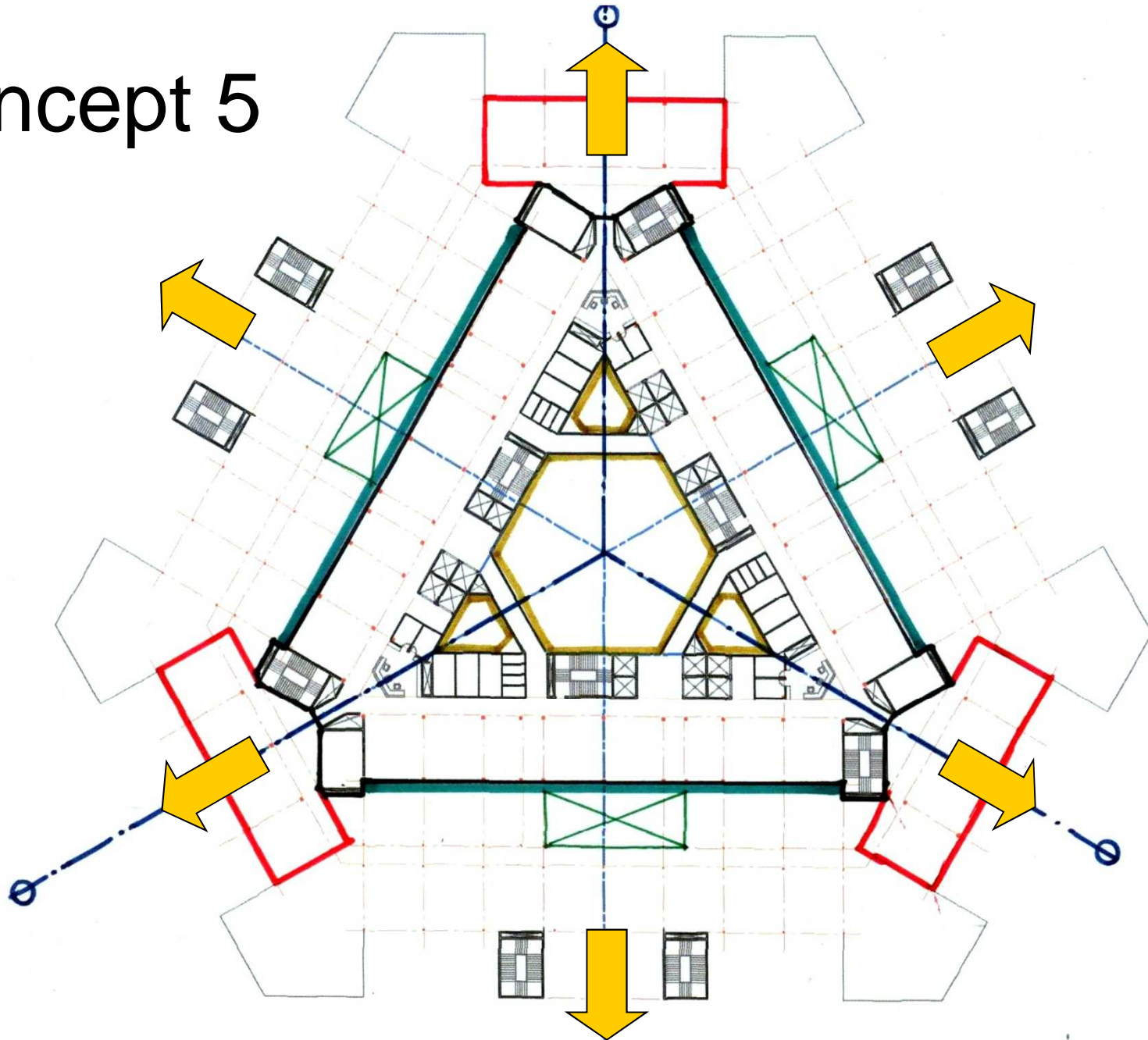


Concept 4



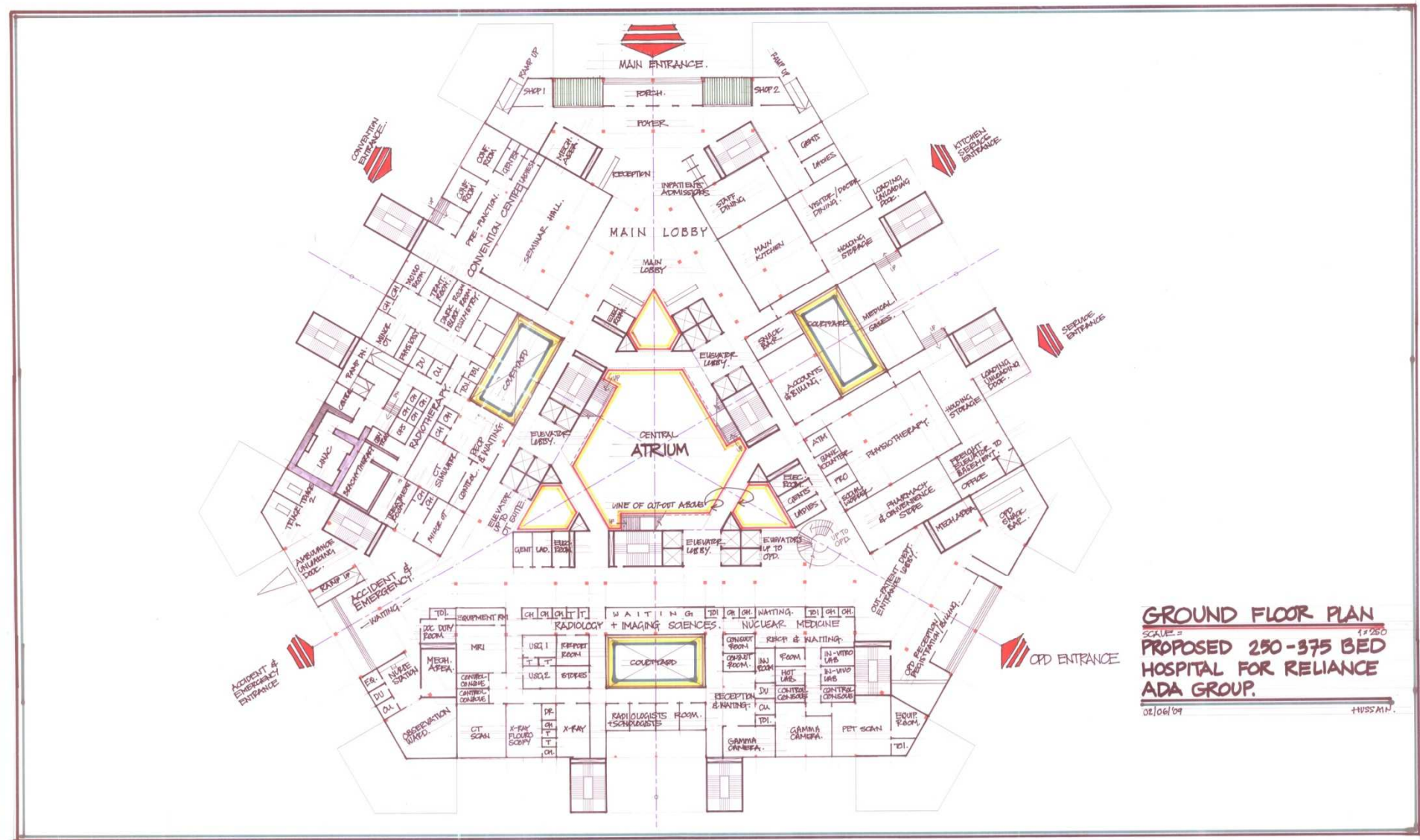
MULTIPLE ENTRANCE POSSIBILITIES

Concept 5



MULTIPLE ORIENTATION POSSIBILITIES

Ground Floor Plan – Proposed Model Hospital



FIRST FLOOR PLAN
 SCALE: 1:250
 PROPOSED 250-375 BED HOSPITAL FOR RELIANCE ADA GROUP.
 04/06/09 HUSSAIN.

SECOND FLOOR PLAN

SCALE: 1/8" = 1'-0"

PROPOSED 250-375 BED MODEL RELIANCE HOSPITAL

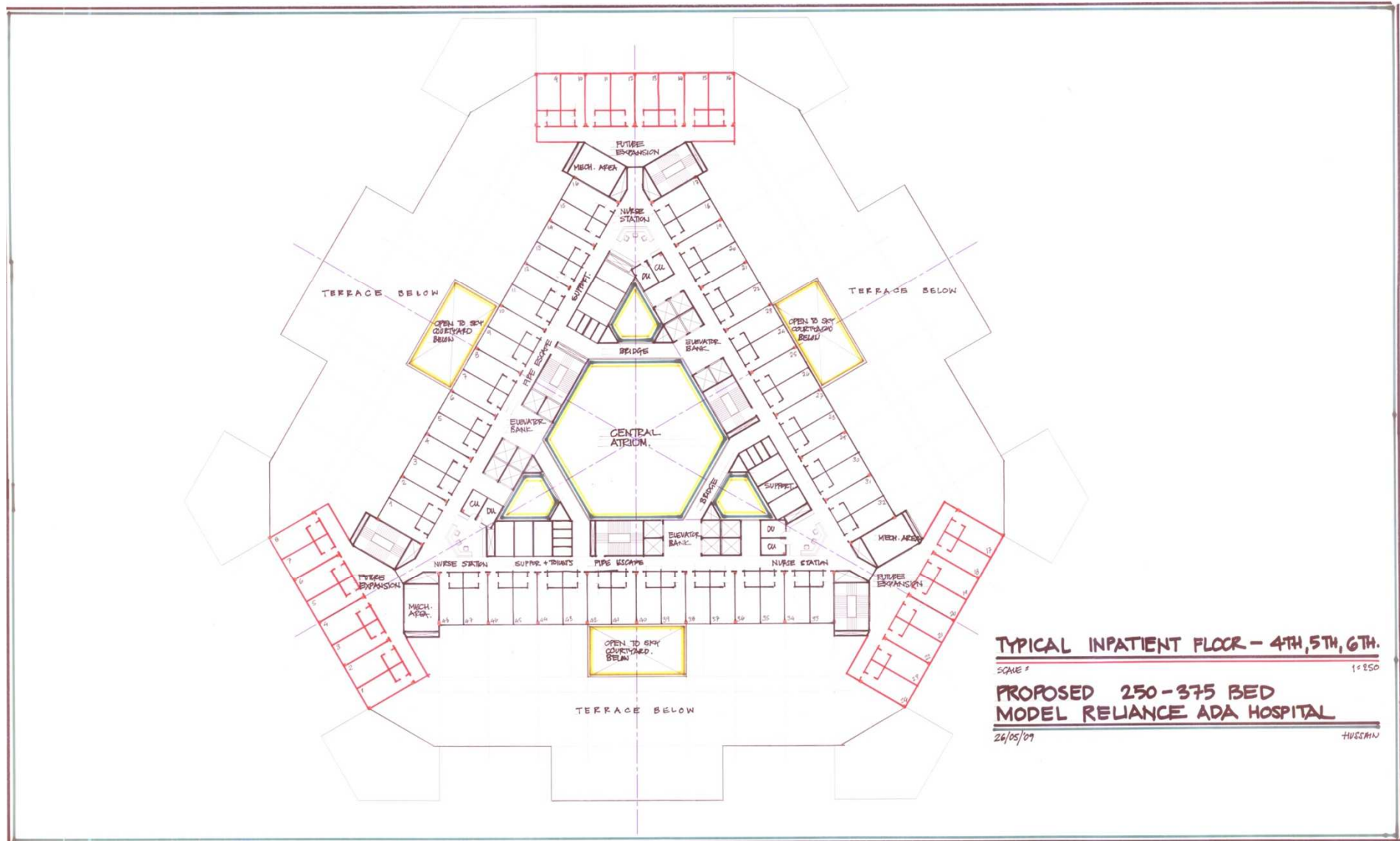
25/05/09 HUSKIN

SCALE 2 10250

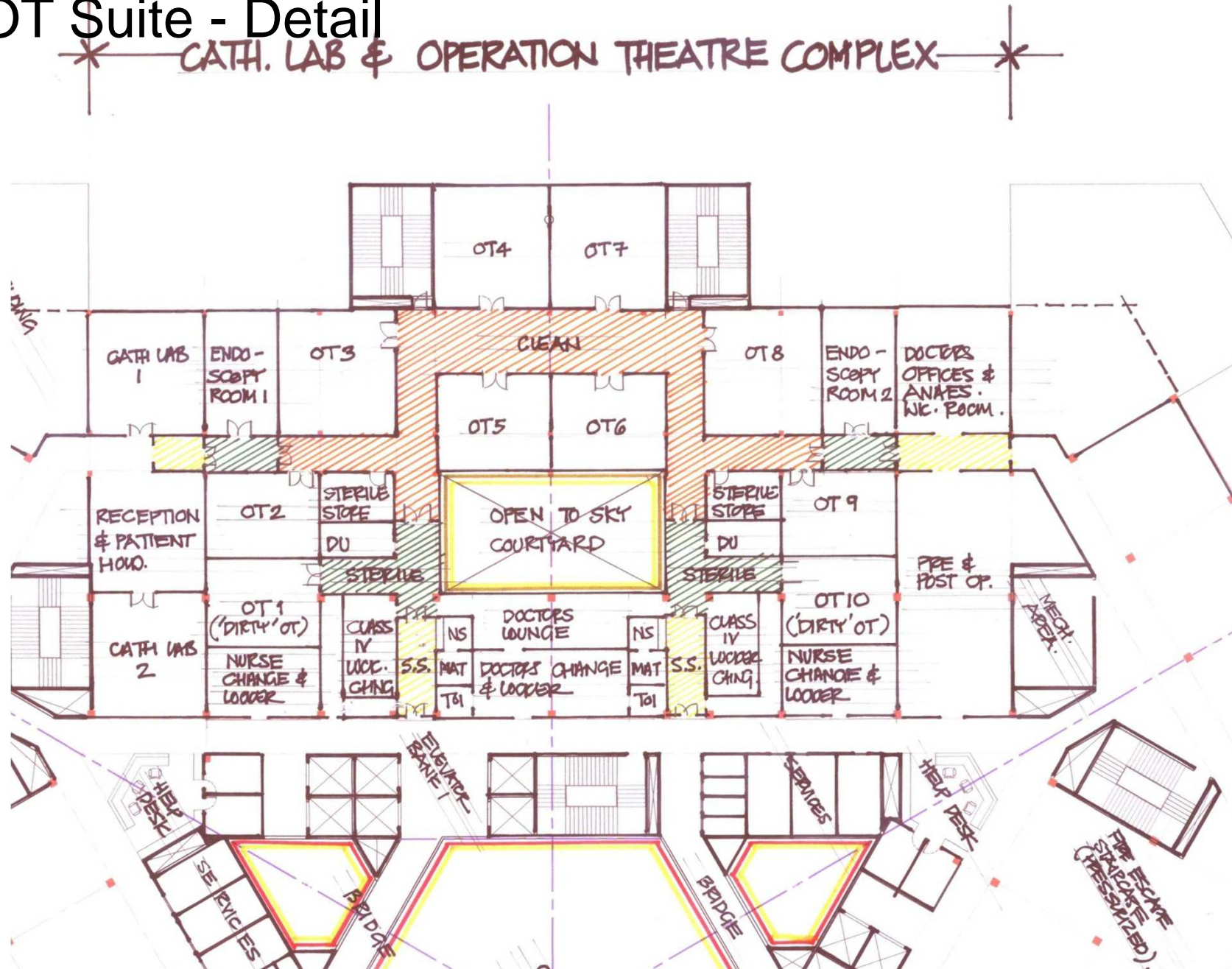
PROPOSED 250-375 BED
MODEL RELIANCE HOSPITAL

25/05/09 HUSSAIN.

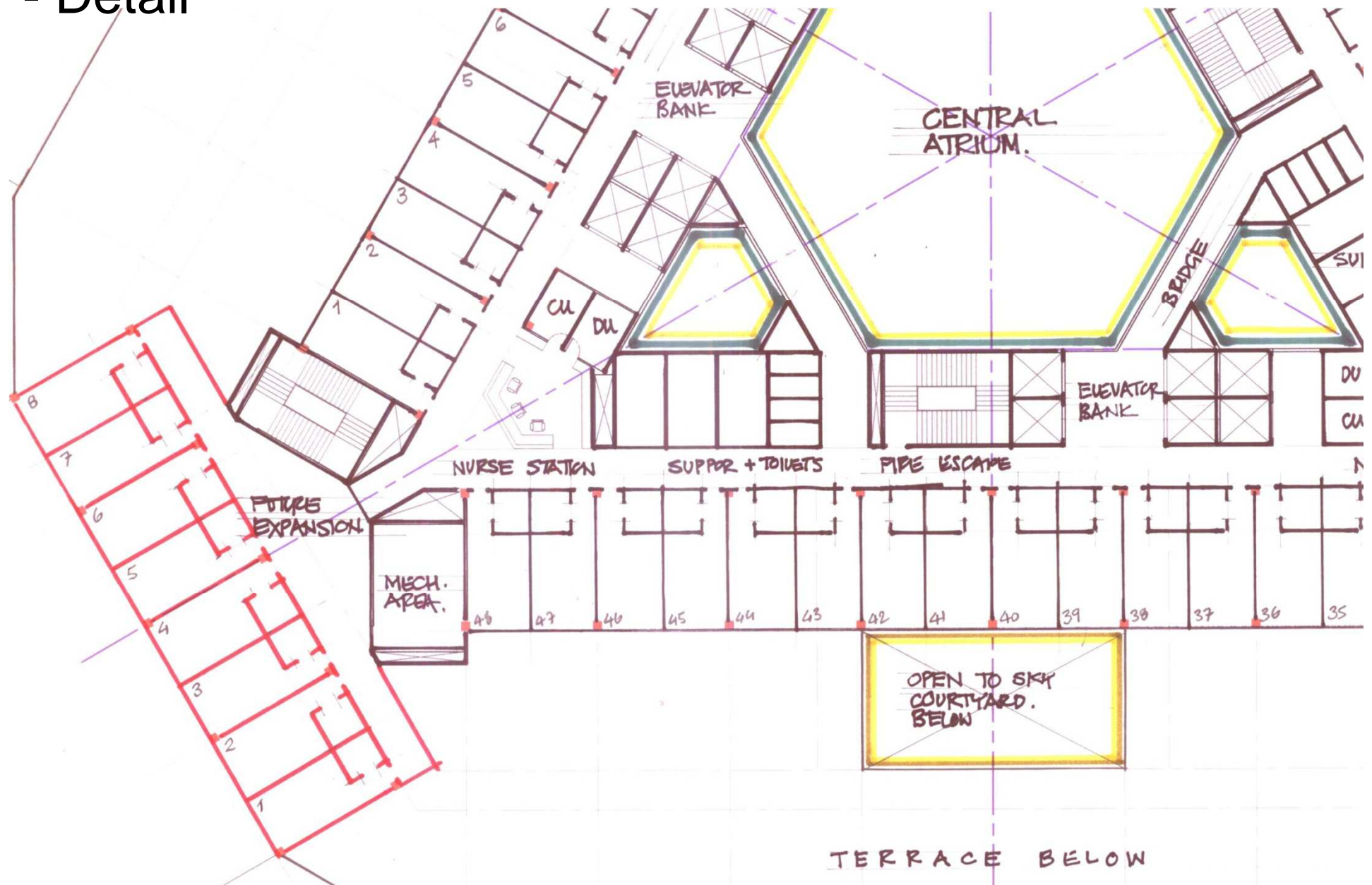
Typical Inpatient Floor – Proposed Model Hospital



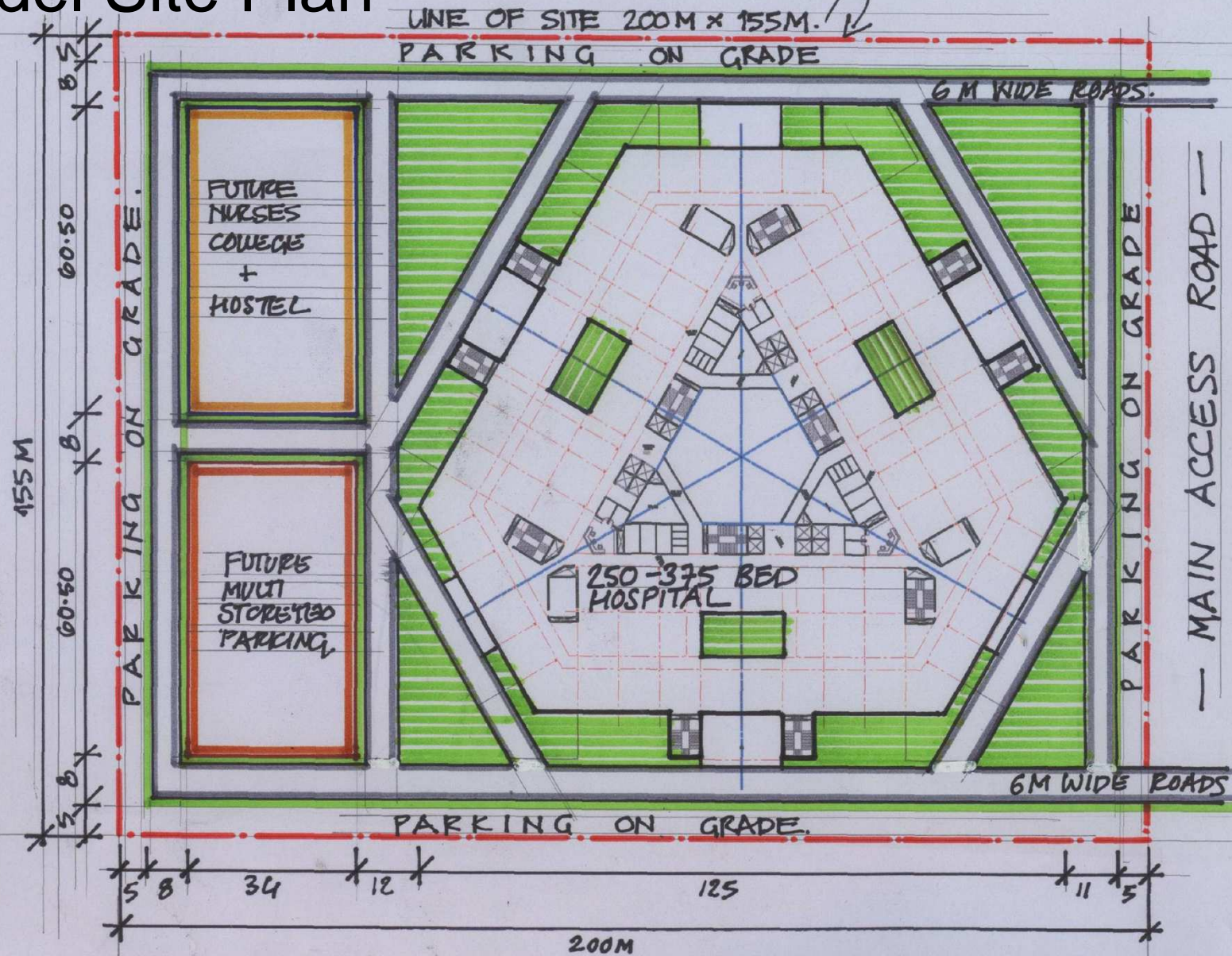
Second Floor Plan – Proposed Model Hospital – OT Suite - Detail



Typical Inpatient Floor (Part) – Proposed Model Hospital - Detail



Model Site Plan



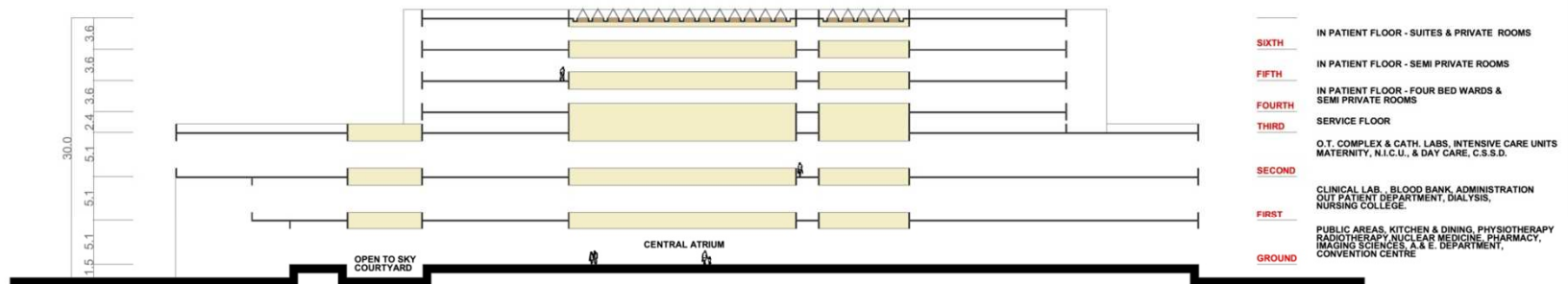
SITE PLAN MINIMUM 7.5 ACRES.

PROPOSED 250-375 BED MODEL HOSPITAL FOR RELIANCE ADA GROUP.

Sample Elevation & Schematic Section



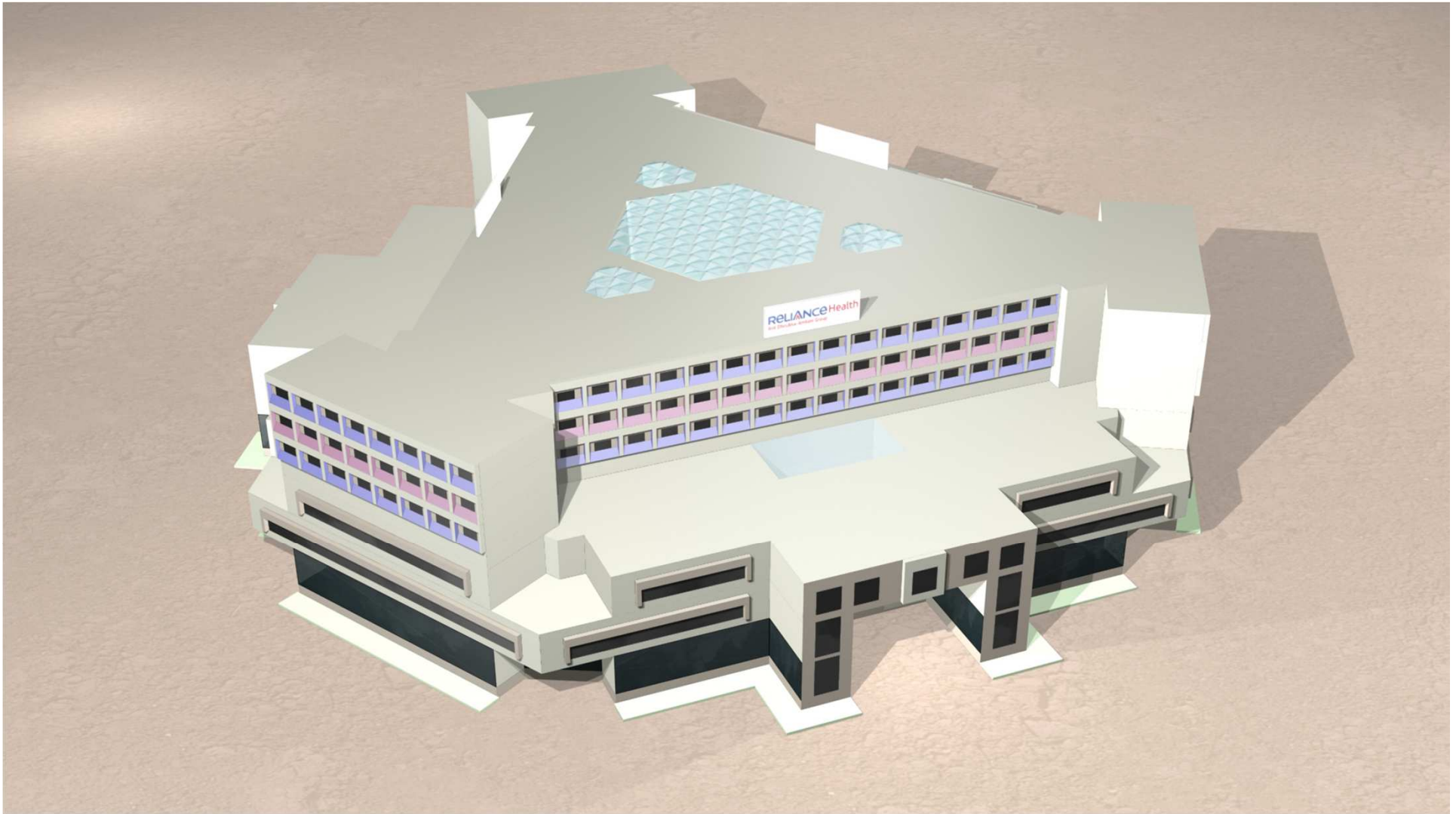
ELEVATION



SCHEMATIC SECTION

**PROPOSED 250-375 BED
MODEL RELIANCE ADA HOSPITAL**





Thank You